

AVAILABLE FOR LEASE

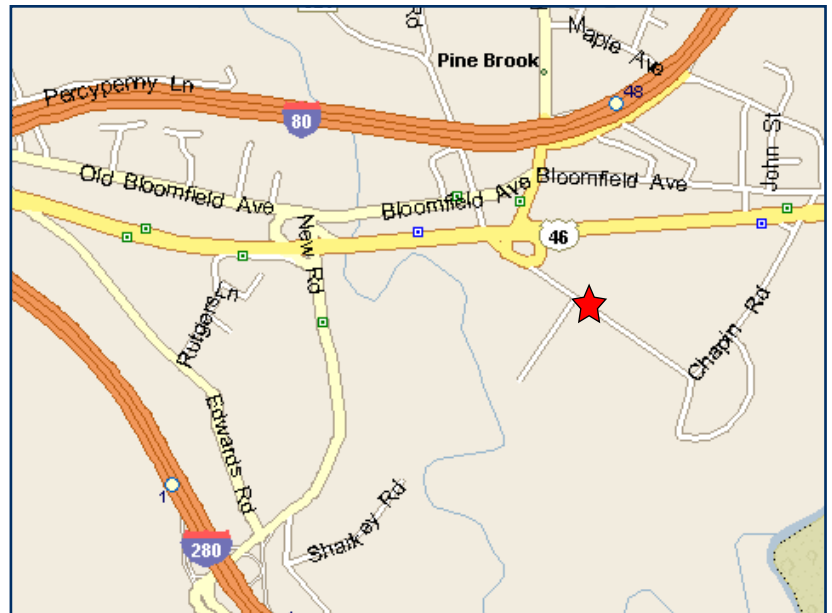


20 Chapin Road, Unit 1010

PINE BROOK | NEW JERSEY

Space Details

TOTAL AVAILABLE:	5,500 ± SF
OFFICE AREA:	4,164 ± SF
WAREHOUSE AREA:	1,336 ± SF
CEILING HEIGHT:	18' CLEAR
LOADING:	1 TAILGATE DOCK
POWER:	200 AMPS
PARKING:	3/1000 SF
SPRINKLER:	100%
ZONING:	LIGHT INDUSTRIAL
POSSESSION:	30 DAYS



For further information or to arrange an inspection, please contact exclusive agents:



Howard B. Weinberg, SIOR
Senior Vice President
973.257.7160
hweinberg@colliershouston.com

Matthew C. Turse
Senior Associate
973.257.7161
mturse@colliershouston.com

Austin C. Godfrey
Associate
973.257.7162
agodfrey@colliershouston.com

EXCLUSIVE AGENT

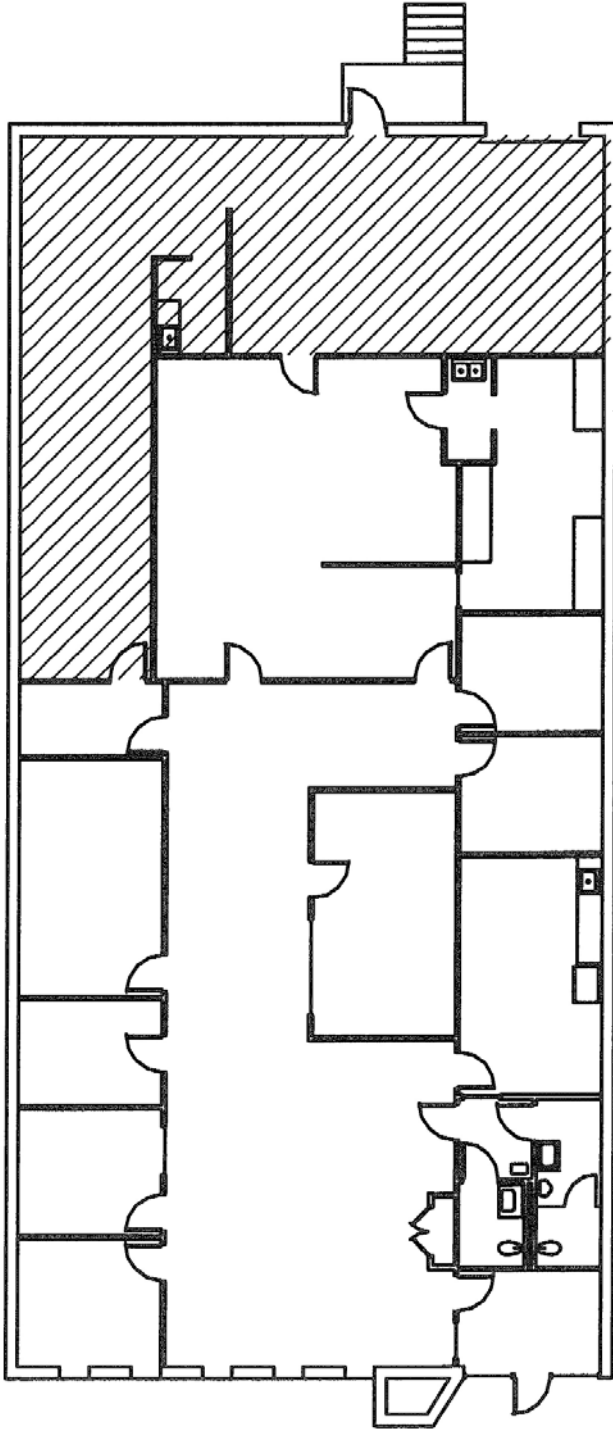
COLLIERS
HOUSTON & CO.

1160 Parsippany Blvd., Ste. 103 | Parsippany, NJ 07054-1811 | T: 973.335.5030 | F: 973.335.9224 | www.colliershouston.com

Information Subject to Error, Omission or Withdrawal Without Notice. Colliers International is a worldwide affiliation of independently owned and operated companies.

20 Chapin Road, Unit 1010

PINE BROOK | NEW JERSEY



MONTVILLE BUSINESS CENTER

Strategically located in Morris County for all business uses. This park offers a combination of office, hi-tech and light industrial units, providing flexibility to expand within the same location. Visible from Route 46, this prominent business park provides great image and accessibility.

- Outstanding location on Route 46 East, 1/4 miles east of New Road / I-80 Interchange and easily accessible to Routes 287 & 280.
- 30 minutes from Manhattan and Newark Liberty International Airport.
- Close proximity to many amenities including banks, shopping, restaurants and hotels.

For further information or to arrange an inspection, please contact exclusive agents:



Howard B. Weinberg, SIOR
Senior Vice President
973.257.7160
hweinberg@colliershouston.com

Matthew C. Turse
Senior Associate
973.257.7161
mturse@colliershouston.com

Austin C. Godfrey
Associate
973.257.7162
agodfrey@colliershouston.com

EXCLUSIVE AGENT

**COLLIERS
HOUSTON & CO.**