

# AVAILABLE FOR LEASE

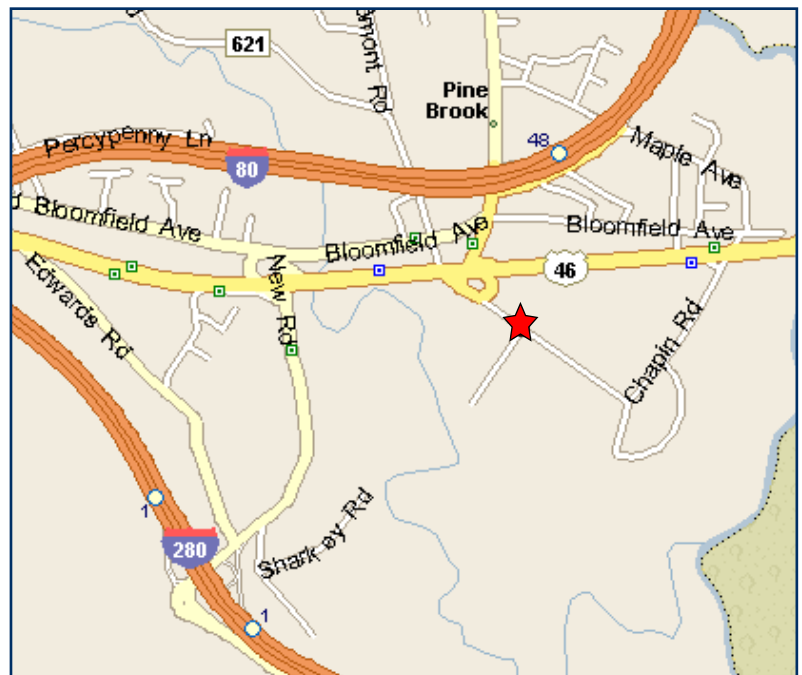


## 16 Chapin Road, Unit 905

PINE BROOK | NEW JERSEY

### Space Details

TOTAL AVAILABLE:	6,000 ± SF
OFFICE AREA:	2,288 ± SF
WAREHOUSE AREA:	3,120 ± SF
CEILING HEIGHT:	18' CLEAR
LOADING:	1 TAILGATE DOCK
POWER:	200 AMPS
PARKING:	3/1000 SF
SPRINKLER:	100%
ZONING:	LIGHT INDUSTRIAL
POSSESSION:	60 DAYS



For further information or to arrange an inspection, please contact exclusive agents:



**Howard B. Weinberg, SIOR**  
Senior Vice President  
973.257.7160  
[hweinberg@colliershouston.com](mailto:hweinberg@colliershouston.com)

**Matthew C. Turse**  
Senior Associate  
973.257.7161  
[mturse@colliershouston.com](mailto:mturse@colliershouston.com)

**Austin C. Godfrey**  
Associate  
973.257.7162  
[agodfrey@colliershouston.com](mailto:agodfrey@colliershouston.com)

EXCLUSIVE AGENT

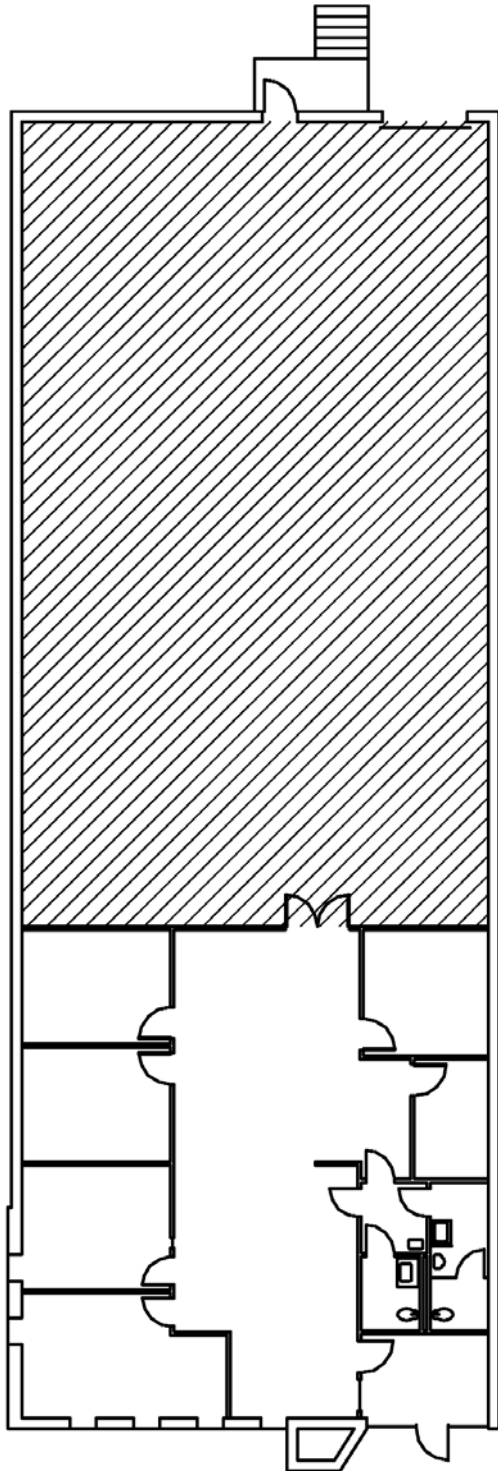
**COLLIERS**  
HOUSTON & CO.

1160 Parsippany Blvd., Ste. 103 | Parsippany, NJ 07054-1811 | T: 973.335.5030 | F: 973.335.9224 | [www.colliershouston.com](http://www.colliershouston.com)

Information Subject to Error, Omission or Withdrawal Without Notice. Colliers International is a worldwide affiliation of independently owned and operated companies.

# 16 Chapin Road, Unit 905

PINE BROOK | NEW JERSEY



## MONTVILLE BUSINESS CENTER

*Strategically located in Morris County for all business uses. This park offers a combination of office, hi-tech and light industrial units, providing flexibility to expand within the same location. Visible from Route 46, this prominent business park provides great image and accessibility.*

- **Outstanding location on Route 46 East, 1/4 miles east of New Road / I-80 Interchange and easily accessible to Routes 287 & 280.**
- **30 minutes from Manhattan and Newark Liberty International Airport.**
- **Close proximity to many amenities including banks, shopping, restaurants and hotels.**

For further information or to arrange an inspection, please contact exclusive agents:



**Howard B. Weinberg, SIOR**  
Senior Vice President  
973.257.7160  
[hweinberg@colliershouston.com](mailto:hweinberg@colliershouston.com)

**Matthew C. Turse**  
Senior Associate  
973.257.7161  
[mturse@colliershouston.com](mailto:mturse@colliershouston.com)

**Austin C. Godfrey**  
Associate  
973.257.7162  
[agodfrey@colliershouston.com](mailto:agodfrey@colliershouston.com)

EXCLUSIVE AGENT

**COLLIERS  
HOUSTON & CO.**